

# Protection for Your Family & Home

## —Smoke Detector & Alarm

### [I. Why you need smoke detector & alarm](#)

### [II. How to choose the best smoke detector & alarm for your home](#)

### [III. Where to install your smoke detector & alarm](#)

### [IV. Where not to install smoke detector & alarm](#)

### [V. How to install your smoke detector & alarm](#)

### [VI. Operating and testing your smoke detector & alarm](#)

### [VII. Maintaining your smoke detector & alarm](#)

### [VIII. How to do in case of fire](#)

### [IX. Good safety habits](#)

## **I. Why you need smoke detectors & Alarm**

The smoke detector & alarm will warn you about a fire at such an early stage that you will have time to escape. The smoke detector & alarm is the only safety device that will also wake you up when you are asleep.

## **II. How to choose the best smoke detector & alarm for your home**

There are two types of smoke detector & alarms: photoelectric and ionization.

PHOTOELECTRIC smoke detector & alarm are very good in slow burning & smoldering fires. These fires usually generate large smoke particles. The family bedroom is the place needs this type of smoke detector & alarm.

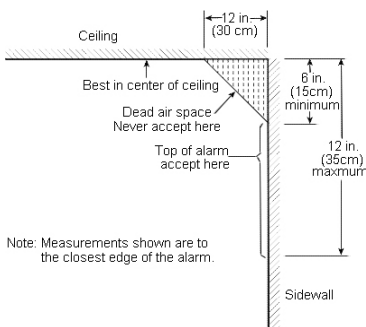
IONIZATION smoke detector & alarm respond more quickly to fast burning fires. These fires usually devour combustibles extremely fast, spread rapidly with little smoke.

For protection against both types of fires, we recommend to install at least one PHOTOELECTRIC & one IONIZATION smoke detector & alarm on each level of your home.

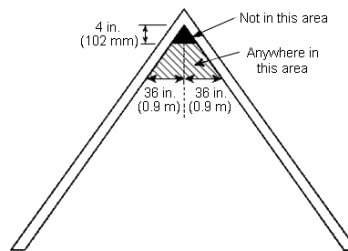
## **III. Where to install your smoke detectors & alarm**

1. At first, you need install your alarms in the bedroom and routeway, locate additional alarms in each bedroom.
2. Locate additional alarms to protect any stairways.
3. Locate at least one alarm on every floor level.
4. Locate one alarm in every room where electric appliances are operated.
5. Install your alarms in the immediate area of the ceiling, as the smoke, heat and combustion products always rise to the ceiling and spread horizontally.
6. Put alarms at both ends of a bedroom hallway or large room if the hallway or room is more than 30 feet (9.1m) long.

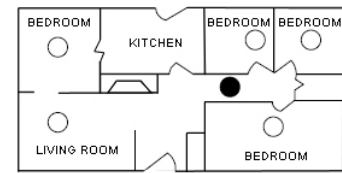
7. When mounting your alarms on the ceiling, locate it at a min. 12" (30cm) from the sidewall and 2 feet (60.96cm) from any inside corner. (See Figure 1)
8. When mounting your alarms on the wall, please locate them 6"-12" (15-35cm) below the ceiling. (See Figure 1)
9. For sloped ceiling, install your alarm 4"-36" (10.2-90cm) away from the top. (See Figure 2).
10. For mobile home installation, please see above 7, 8 and 9.



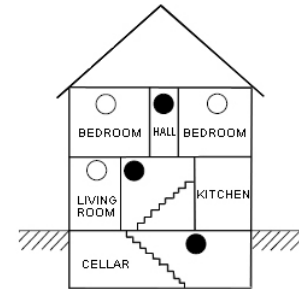
**Figure 1**



**Figure 2**



**SINGLE FLOOR PLAN**



**MULTIPLE FLOOR PLAN**

- Smoke Alarms for Minimum Protection
- Smoke Alarms for Additional Protection

**Figure 3**

## IV. Where not to install smoke detectors & alarm

1. Situations where the temperature may fall below 0°C or rise above 40°C.
2. Ceiling fans and other flow areas.
3. In the garage where exhaust fumes may cause nuisance alarms or failure to alarm..
4. In very humid areas such as bathrooms, shower rooms where the humidity may exceed 90%.
5. In the kitchen where the cooking fumes or steam may cause nuisance alarm.
6. The areas near fluorescent lights where may cause nuisance alarm.

FOR MAXIMUM PROTECTION, AN ALARM SHOULD BE FITTED IN EVERY ROOM. (EXCEPT KITCHEN, BATHROOM AND GARAGE)

## V. How to install your smoke detector & alarm

1. Ensure that there is no electrical wiring or pipe work in the mounting location.
2. Mark the two mounting holes locations with the mounting bracket.
3. Drill holes in the positions marked.
4. Screw mounting bracket to the mounting surface.
5. Insert a 9V battery correctly into the battery compartment on the rear of the alarm. Ensure the metal tab is fully depressed by the battery.
6. Assemble the alarm onto the mounting plate. Lock in position by giving a clockwise quarter turn. Test your alarm by depressing and holding down the test button for several seconds, or by blowing smoke into the alarm. This should sound the alarm.

## **VI. Operating and testing your smoke detector & alarm**

1. OPERATION: When product combustion is detected, the alarm will sounds a loud pulsating alarm until the air is cleared.
2. FLASHING LED LIGHT: Once the smoke alarm has been installed, the LED light under the test button, should flash approximately once a minute to indicate that the alarm is normal operation. During the alarm condition the light will flash quickly.
3. TESTING: Test your smoke alarm by pushing and holding down the test button for several seconds. Aloud pulsating alarm should sound to indicate the correct function. TEST YOUR ALARM WEEKLY TO ENSURE IT IS WORKING CORRECTLY.

## **VII. Maintaining your smoke detector & alarm**

1. If the alarm emit a short “beep” once a minute, that means the battery is at the end of its life and should be replaced immediately. The low voltage warning will be given for 7-15 days.
2. If the LED light does not flash every minute, please replace the battery.
3. Clean your alarm at least once a month to prevent dust built up. This can be done using a vacuum cleaner with the brush attachment. NEVER USE WATER, CLEANERS OR SOLVENTS TO CLEAN YOUR ALARM AS THEY MAY DAMAGE IT.

## **VIII. How to do in case of fire**

1. Leaving immediately by your escape plan. Do not waste time getting dressed or pick up valuables.
2. Feeling doors before opening them to see if they are hot. If cool, open it slightly and be ready to slam it shut if heat and smoke rush in. DO NOT OPEN A HOT DOOR!
3. Stay close to the floor if the air is smoky. Cover your nose and mouth with a cloth, wet if possible.
4. Once outside, go to your selected meeting place and make sure every one is there.
5. Call the fire brigade from your neighbor's home-not yours.
6. Do not return to your home unless the fire officials say it is alright to do so.

## **IX. Good safety habits**

1. Do not smoke in bed.
2. Keep matches and lighters away from children.
3. Do not clean with flammable liquid.
4. Maintain fire fighting equipment such as fire extinguishers, escape ladders etc, and make sure all occupants know how to use them correctly.
5. Make sure escape routes remain free of any obstructions.

We are a Chinese supplier focus on fire safety equipment. Here are some pictures of our smoke detector & alarms (CE-SGS approved, EN14604, all of our smoke detector & alarms would be five years guarantee):

[www.starkinsafety.com](http://www.starkinsafety.com)



Copyright © 2007-2009 [Starkin Safety Co., Limited](http://www.starkinsafety.com) All Rights Reserved.